

# COMMUNITY SAFETY FORUM

## Agenda Item 32

Brighton & Hove City Council

<b>Subject:</b>	<b>Crime trends and performance in Brighton &amp; Hove: Position at end October 2010</b>		
<b>Date of Meeting:</b>	<b>18 January 2011</b>		
<b>Report of:</b>	<b><i>Director of Environment</i></b>		
<b>Contact Officer:</b>	<b>Name:</b>	<b><i>Ruth Condon</i></b>	<b>Tel: 29-1103</b>
	<b>E-mail:</b>	<b>ruth.condon@brighton-hove.gov.uk</b>	
<b>Wards Affected:</b>	<b>All</b>		

### FOR GENERAL RELEASE

#### 1. SUMMARY AND POLICY CONTEXT:

- 1.1 This report is intended to keep members of the Community Safety Forum apprised recent developments relating to priority areas in the Brighton & Hove Community Safety, Crime Reduction and Drugs Strategy, 2008-11. It describes some recent activities and also provides statistical police data on key crime types up to October 2010 and progress against targets.
- 1.2 Graphs with monthly data going back to April 2006 are also provided. This enables recent data to be interpreted in the context of both longer term trends and also seasonal crime cycles (where appropriate).

#### 2. RECOMMENDATIONS:

- (1) The Community Safety Forum notes the information provided in this report and invited to:
  - i) comment on any developments they may be aware of from their own or their organisation's experience which may help to understand and interpret the police crime data contained in this report.
  - ii) consider the potential for supporting crime reduction and community safety when their organisations develop and take forward projects.

#### 3. INFORMATION:

##### **Total Police Recorded Crime**

- 3.1 After the first seven months of 2010/11 (to end of October) there was a reduction in overall crime of 3.8% compared to the same months of 2009/10 and this exceeds our 3% reduction target. This is a continuation of the long term downward trend experienced in the past ten years.

### **Criminal Damage**

- 3.2 Criminal damage offences during the first seven months of 2010/11 were 15% fewer than in the same months in 2009/10. Numbers experience between July and September were particularly low for the time of year.
- 3.3 Work referenced in the last commentary around work to tackle chewing gum and flyers/stickers continues and the number of Cityclean officers with responsibility for enforcement has increased. Local Action Team and Joint Action Group meetings review reports of criminal damage and resources are targeted as appropriate. For example, a recent partnership response to a spike in damage to vehicles in Whitehawk resulted in good partnership working with the production of area and incident specific interventions which resulted in the cessation of daily occurrences of damage to vehicles.
- 3.4 Partnership work led by the Environment Improvement Team has resulted in the renovation and conversion of an underground car park kiosk in the form of a 'tardis' for use as a base for linking up the police and other services with residents. Community Payback has been involved in the project and local residents and businesses have also made other improvements in the local area. The project is hoped to be a deterrent to anti-social behaviour and vandalism in the area.
- 3.5 The number of fire service recorded arson incidents over the last few months has been particularly low compared with the same months in previous years, supporting the long term decline. Proactive work by the Fire and Rescue Service and partners in taking action to reduce such incidents continues.

### **Violent Crime**

- 3.6 The number violent offences involving injury (including both serious and other injury) has reduced in the first seven months of 2010/11 by 6% compared with the same months in 2009/10, which is better than the 3% reduction target. Because not all violent crimes come to the attention of the police, work to improve the quality of data collected at A&E on assault-related attendances is continuing to be taken forward. This information is beginning to be shared with the police and others for the targeting of preventative work.
- 3.7 Alcohol consumption in the city, while bringing certain economic benefits, also brings with it problems related to violence as well as other health and wellbeing issues. Steps are being taken through the 'intelligent commissioning' process to explore what the future direction of the city's approach towards alcohol should be and what services are needed to address alcohol-related problems.

### **Sexual Offences**

- 3.8 In the first seven months of 2010/11 there have been 214 sexual offences, roughly the same number as in the same months of 2009/10. Arrangements between the Sexual Assault Referral Centre and our local rape crisis, ISVA (Independent Sexual Violence Advisor) and counselling services continue to support local victims. Our local provider, Survivors Network, have began receiving referrals directly from the SARC. Recommendations arising from the scrutiny of sexual violence services also continue to be taken forward.

### **Domestic Burglary**

- 3.9 The number of domestic burglaries in the first seven months of 2010/11 is 24% lower than in 2009/10, continuing a longer term decline since 2008/9. Problems involving domestic burglary by a small group of youth offenders last year has been addressed by both preventative and enforcement work. Police work to speed up DNA analysis and other processes has led to offenders are being identified and arrested a lot quicker thereby reducing the opportunities to commit more offences.

### **Motor Vehicle and Cycle Theft**

- 3.10 The number of vehicle thefts during 2010/11 to date have decreased by 11% compared with 2009/10. This decrease applies both to thefts of and thefts from motor vehicles. Vehicle crime prevention advice has continued to be distributed across the city, helping to maintain this decrease.
- 3.11 During the first seven months of 2010/11 police recorded cycle thefts increased by 11% compared with last year, with numbers of thefts in each of the last seven months being between about 100 and 130 per month, remaining relatively high into the autumn when numbers in previous years may have begun to decline. Cycle theft prevention advice continues to be distributed across the city. Over two hundred cyclists have now registered on immobilise.com after our recent campaign.

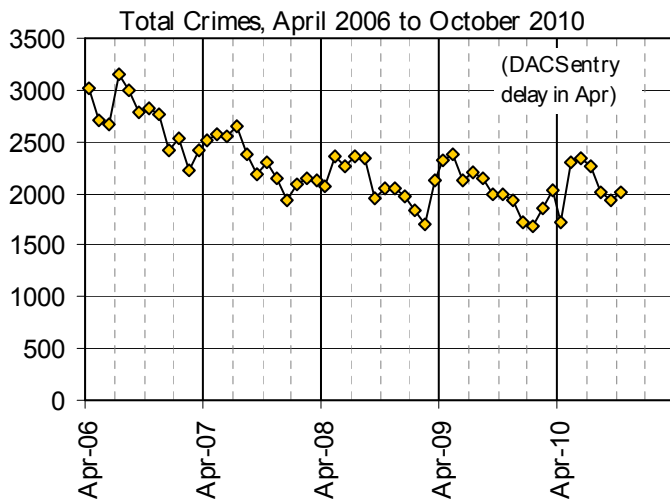
### **Domestic Violence**

- 3.12 The number of domestic violence crimes and crime-related incidents reported to the police continues to increase, with numbers since May at least 300 per month. So far during 2010/11 numbers are 6% higher than the same months last year. While seeking to decrease the incidence of DV, there is also ongoing work to increase reporting. The police are responding promptly with investigating offences and improving other processes around their handling of domestic violence cases. As a consequence more offences are being detected and charged than in previous months and years. The 'Multi-Agency Risk Assessment Conference (MARAC)' process which plans appropriate responses to support high risk victims of DV is working effectively and the percentage of finalised court cases which have successful outcomes remains at over 70%. Over twenty agencies involved in the Brighton & Hove MARAC have received training in the effective use of the Domestic Abuse, Stalking, Harassment and so-called Honour Base Risk Assessment Tool and participants will now cascade this learning to their teams. The wide range of services provided around domestic violence are being examined through the 'intelligent commissioning' process to make sure that services provided are aligned to the needs of victims, perpetrators, young people and children.
- 3.13 A GBT (Gay, Bisexual and Trans) DV worker is now employed by RISE. Also a new online resource has been produced to assist LGBT people who have experienced or are experiencing domestic violence. It is accessed via the Safe in the City website (<http://www.safeinthecity.info/?q=node/199>).

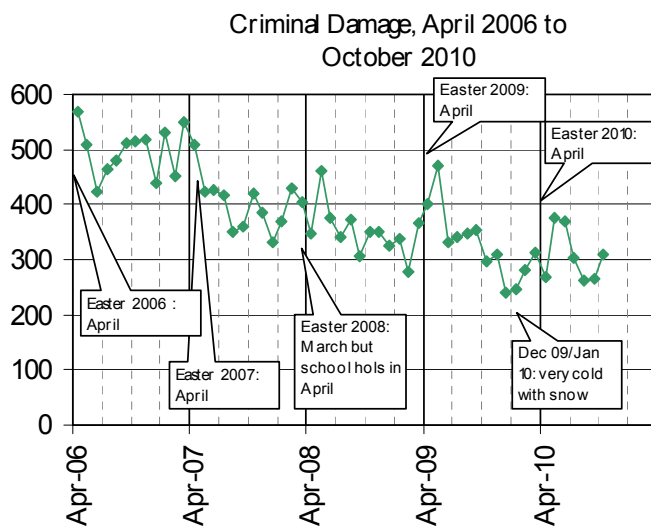
### **Hate Incidents and Crimes**

- 3.14 The number of racist and religiously motivated incidents (RRMI) recorded by the on the police crime database continues to decline, although the number recorded through the multi-agency Hate Incident Report Form remains relatively stable. Work to manage tensions arising from the English Nationalist Alliance march and other incidents has required robust tension monitoring arrangements. A DVD and resource pack is being prepared to promote reporting of RRMI in schools and young people's settings. Also, work to encourage more reporting and information sharing around incidents in the health sector is being planned.
- 3.15 Police recorded LGBT-motivated hate crimes and incidents also continue to fall. New LGBT hate crime information sheets will shortly available for the public and professionals with updated advice and contact information. LGBT World Aids Day at the beginning of December this year is themed around challenging stigma and this is being supported by the Community Safety Partnership. Also, the international Transgender Day of Remembrance in November was supported locally by partnership work with the Clare Project and this work has been recognised nationally. Work in co-operation with the Universities of Sussex and Brighton student unions has enabled the Partnership Community Safety Team and LGBT police officers to engage with students through Freshers Week and other student events using a range of media, especially non-paper-based communication technologies (eg. Blue tooth technology aimed at smart phones).
- 3.16 There were 18 disability hate incidents reported to the Partnership Community Safety Team between April and September 2010. Although numbers are increasing over the period since a disability hate casework service has been in place, there is believed to be much scope for increased reporting. 'True Vision' easy read self reporting forms and headline messages to raise the profile of disability hate incidents are being launched in early December.

## Crime trends up to October 2010



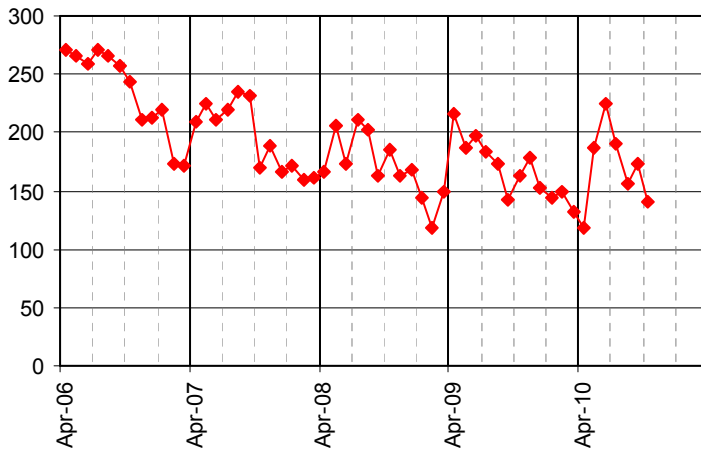
3.17 The typical seasonal pattern in crime levels has continued with numbers of crimes falling again since their summer peak, averaging about 2,000 total crimes per month in the last three months<sup>1</sup>.



3.18 Recent months have continued to record relatively low levels of criminal damage compared with previous years.

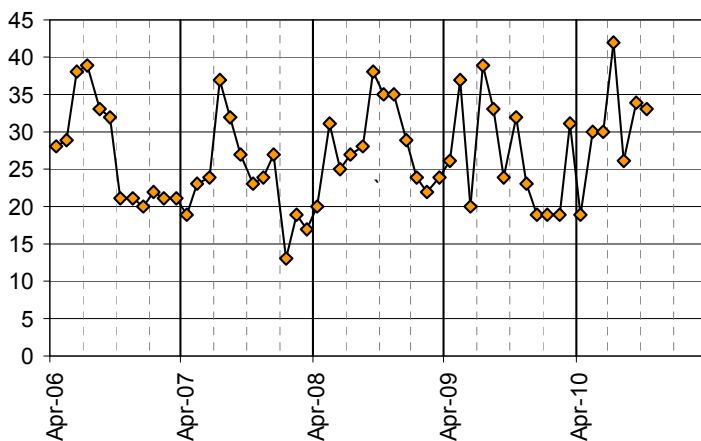
<sup>1</sup> There was a delay in entering crimes into the police data recording system in April, so numbers are showing fewer in that month, and numbers in the following two months are correspondingly enhanced. This effect is seen in a number of the crime types shown in this document.

All Injury Violence  
April 2006 to October 2010



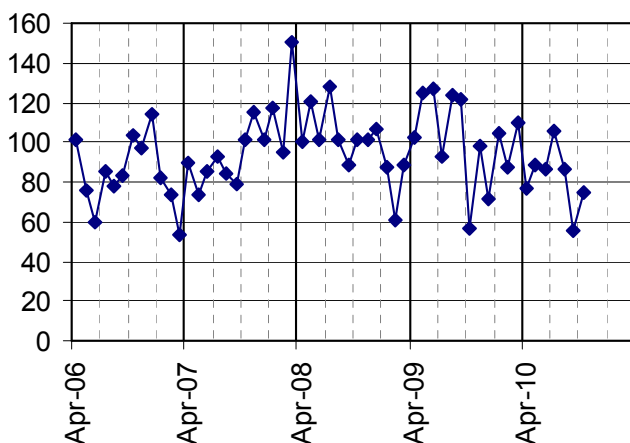
3.19 There is a clear seasonal pattern in injury violence. Monthly numbers have shown a significant drop since the peak in June.

Sexual Offences  
April 2006 - October 2010

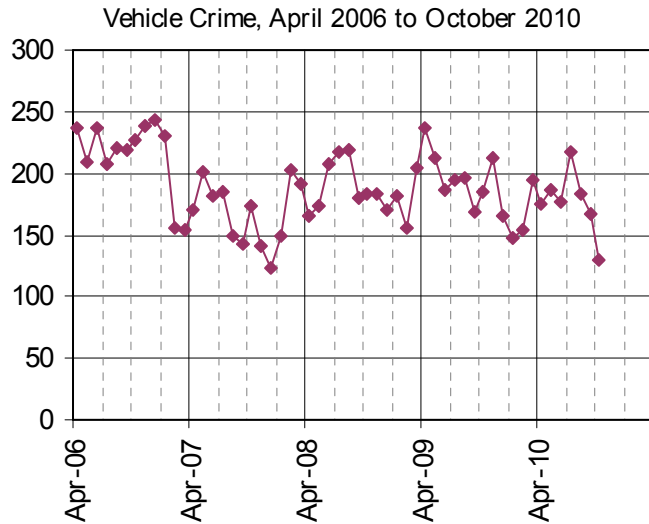


3.20 Due to the relatively low numbers of sexual offences, numbers tend to fluctuate from month to month and it is difficult to be certain about trends. In the first 7 months of 2010/11 numbers are very slightly higher than in the same months in 2009/10.

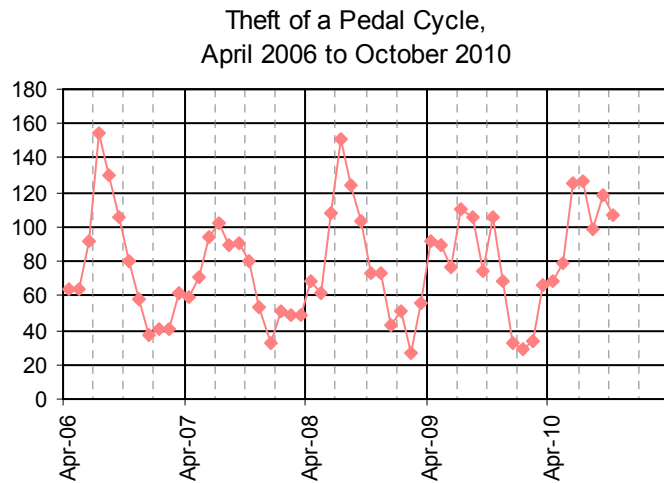
Domestic Burglary, April 2006 to October 2010



3.21 The number of domestic burglaries dropped to a particularly low level in September and have remained relatively low during October.



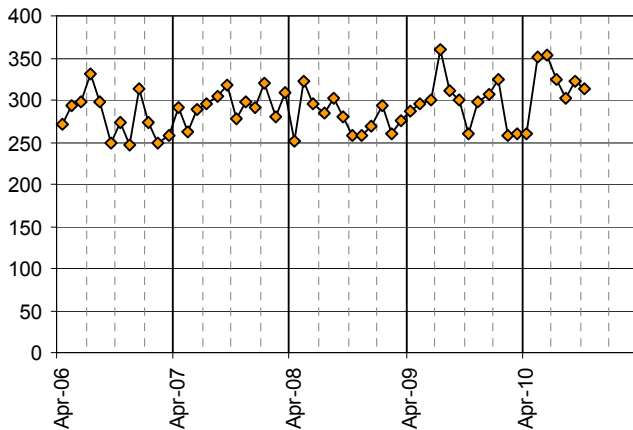
3.22 The number of vehicle crimes in October dropped to its lowest level (129 crimes) since December 2007. There has been a downward trend in both thefts of and thefts from vehicles since the summer months



3.23 While the consistent rise in pedal cycle thefts since last winter until the summer is in line with seasonal expectations, numbers in September and October have remained higher than in previous years.

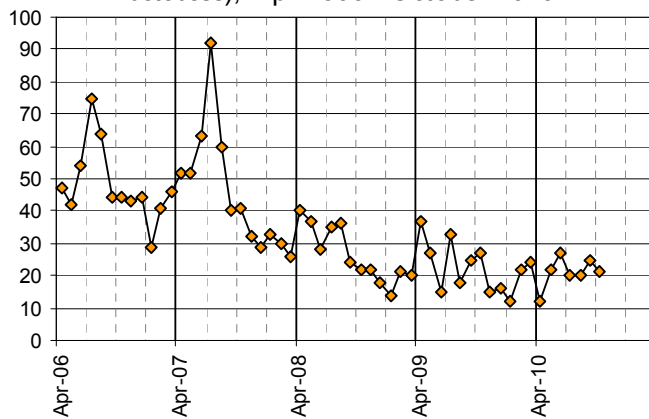
3.24 Police crime data presented in this report only reflect those crimes which are reported and recorded. There is likely to be a level of underreporting in many crime types. However, domestic violence and the hate crimes on this page are likely to be particularly liable to underreporting.

Domestic Violence Crimes and Incidents,  
April 2006 - October 2010



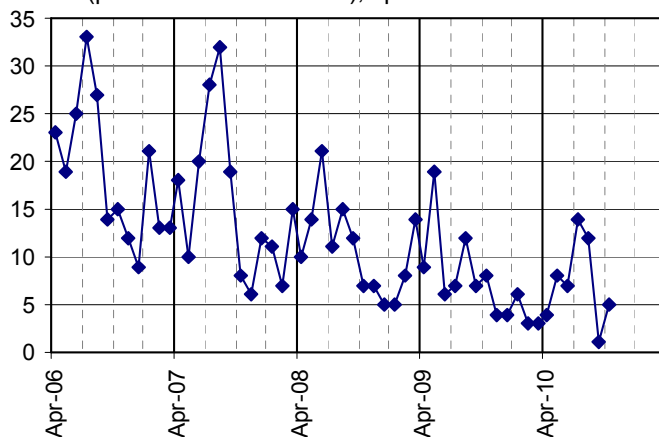
3.25 The number of domestic violence crimes and crime-related incidents have remained at over 300 per month over the last few months, generally higher than previous years. The number of crimes, while showing a declining trend up to 2009/10 is now showing an increase.

Racist and Religiously Motivated Crimes and  
crime-related Incidents (police crime  
database), Apr 2006 - October 2010



3.26 The declining trend in racist and religiously motivated incidents and crimes appears to be continuing with between 20 and 30 per month over recent months.

LGBT Hate Crimes and crime-related Incidents  
(police crime database), Apr 2006 to Oct 2010



3.27 The number of police-recorded LGBT hated crimes and crime-related incidents continue to show a seasonal pattern overlaying a long term decline. There was just a single incident on the database in September.



## Performance data for key crime types, 2010/11

Police recorded crimes April to October (inclusive)	number of crimes Apr 09- Oct 09	number of crimes Apr 10- Oct 10	reduction target (from 2009/10 baseline)	performance against target to date		rank within 15 bench- marked CSPs
				on target		
Total Crimes	15165	14596	-3%	on target		8
Criminal Damage	2544	2155	-5%	on target		12
Injury Violence <sup>2</sup>	1261	1189	-3%	on target		9 <sup>3</sup>
Sexual Offences	211	214	-	-		10
Domestic Burglary	750	574	-	-		2
Theft from/of a Motor Vehicle	1382	1235	-	-		5
Pedal Cycle Theft	655	726	-	-		7
Domestic Violence Crimes and Incidents	2112	2231	-	-		n/a <sup>4</sup>
Racist/Rel. Crimes and Incidents	196	147	-	-		n/a
LGBT Hate Crimes and Incidents	68	51	-	-		n/a

<sup>2</sup> As defined by Sussex Police

<sup>3</sup> iQuanta category 'wounding (serious and other)'

<sup>4</sup> Because DV and hate crimes are locally 'flagged' crimes and do not have nationally defined classification codes, comparative/benchmarking data are not available. Also, because DV, hate crimes and sexual offences are subject to underreporting and local work is being undertaken to increase reporting of these crimes, it is not appropriate to judge performance in comparison with other CSPs based on the number of police recorded crimes.

## **Appendix.**

### **A note on how Brighton & Hove's performance is compared with other Community Safety Partnerships**

For the purposes of assessing the relative performance of the Brighton & Hove Community Safety Partnership (CSP) in reducing crime, our performance is compared (benchmarked) with the performance of 14 other 'Most Similar' CSPs. The Home Office have created these groupings to help provide information on how CSPs, police forces, etc. are performing.

CSPs within a 'Most Similar' grouping have been assessed as having similar characteristics in terms of 24 socio-demographic and geographic variables which are strongly linked to increased levels of crime, fear of crime, or incidents.

We are able to compare our crime trends and current performance with our Most Similar CSPs. The data presented on page 1 of this report (see right-most column of the table) shows our ranked position within this group of 15 CSPs. For example, a ranking of 1 indicates that a CSP is performing best within the group, and a ranking of 8 shows that the CSP is in the middle ranked position.

#### **Other Members of Brighton & Hove's Most Similar CSP Group (from Apr 2010) are as follows:**

LB Barnet  
Bournemouth  
Cheltenham  
LB Croydon  
Eastbourne  
LB Hackney  
LB Hammersmith & Fulham  
LB Kensington & Chelsea  
LB Lambeth  
Reading  
LB Southwark  
LB Wandsworth  
Windsor and Maidenhead  
Wycombe